



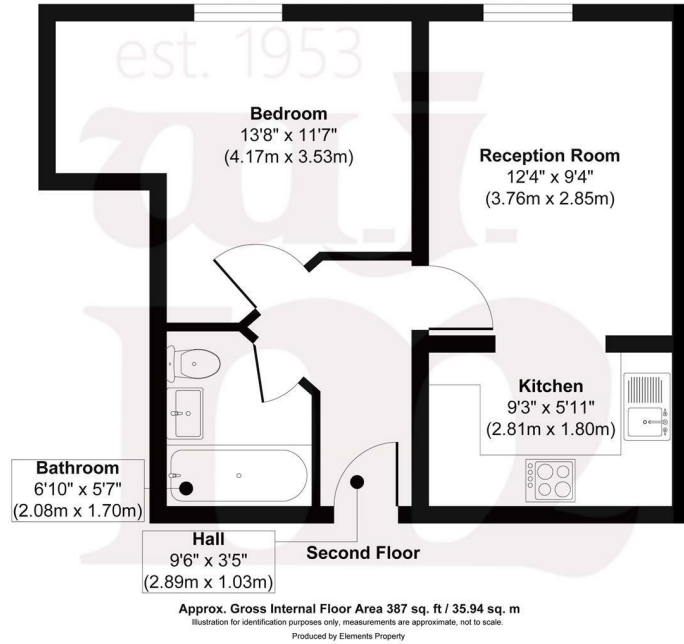
MILE END ROAD, E1

£269,995 L/H

- Chain free
- Ideal first purchase
- Surrounded by amenities
- Secure block
- 387sq ft / 36sq m
- Fantastic public transport links

wj.
meade

Greencourt House



WJ Meade are pleased to present this one bedroom apartment on the second floor of a private development, perfectly situated in the heart of Stepney Green just moments from the tube station. Arranged with an open plan kitchen to reception room, contemporary bathroom suite and comfortable sized bedroom. Located ideally for access into the City with the surrounding buzz of East London.

All sizes are approximate. The Agent has not tested any apparatus, equipment, fixtures and fittings, or services and so cannot verify that they are in working order or fit for the purpose. A buyer is advised to obtain verification from their Solicitors or Surveyor. Photographs are for illustration purposes only and may depict items, which are not for sale or included in the sale price. References to tenure of a property are based upon information supplied by the vendor. The agent has not had sight of the title documents, a buyer is advised to obtain verification from their solicitor. Money Laundering Regulations 2003: Intending purchasers will be asked to produce identification, documentation at a later stage and we would ask for your co-operation in order that there will be no delay in agreeing the sale.

These particulars are intended to give a fair description of the property only and are in no way guaranteed, nor do of any contract. They are issued on the express condition that all negotiations are conducted through W.J. Meade Estate Agents. All subject to contract and to being unsold.

Service charge £2,074.96 pa

Ground rent £300 pa

147 years lease

Council tax band C

Current EPC Rating 78

Tenure: Leasehold

